

Downloading & Installing LXI Fonts & Clip Art

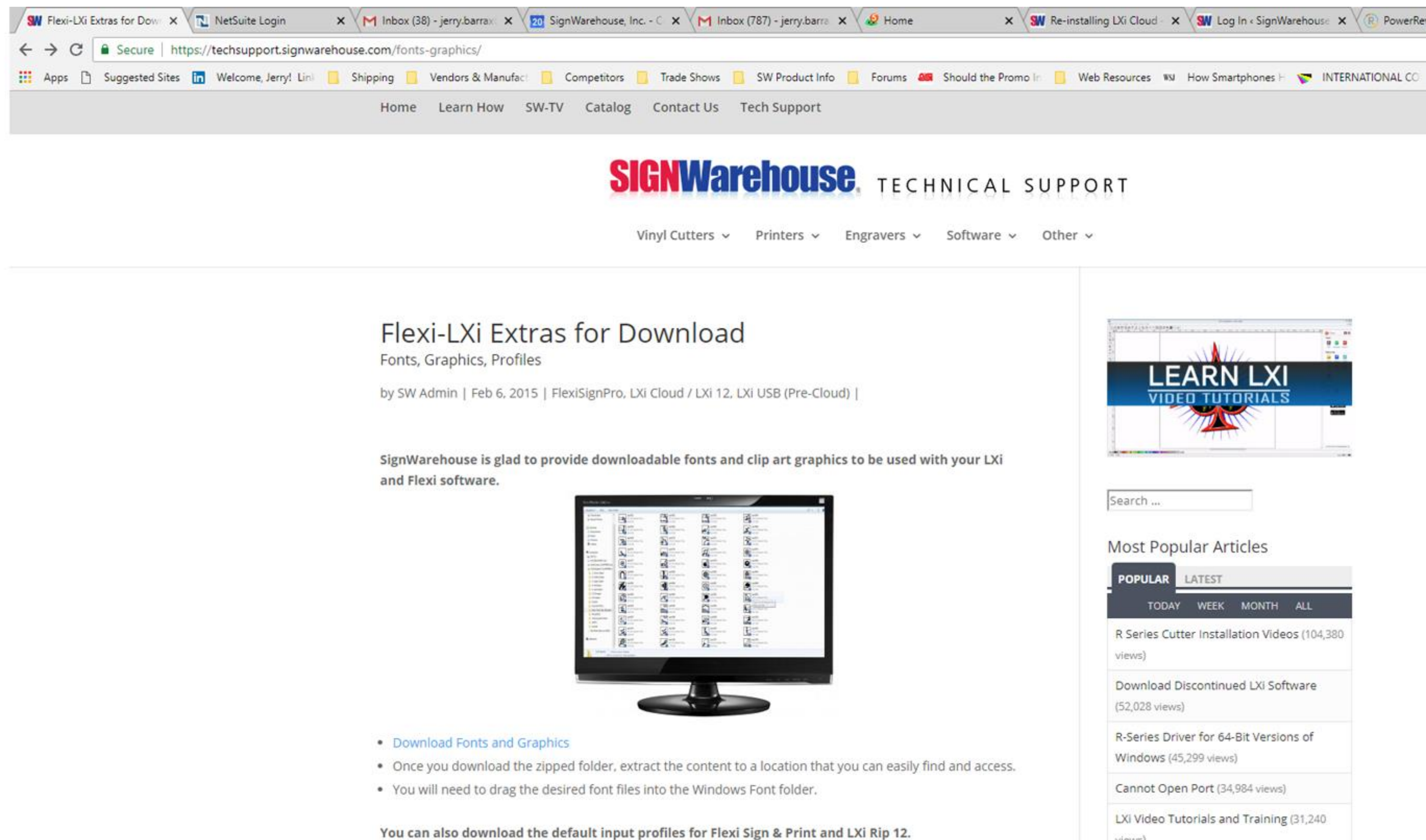
Surf to support.signwarehouse.com.

From the Software drop down menu, select LXI Cloud

Click on the top folder. From the vast LXI resources page, scroll down to Downloads.

Click on “Flexi-LXi Extras for Download”

Or just surf to...<https://techsupport.signwarehouse.com/fonts-graphics/>



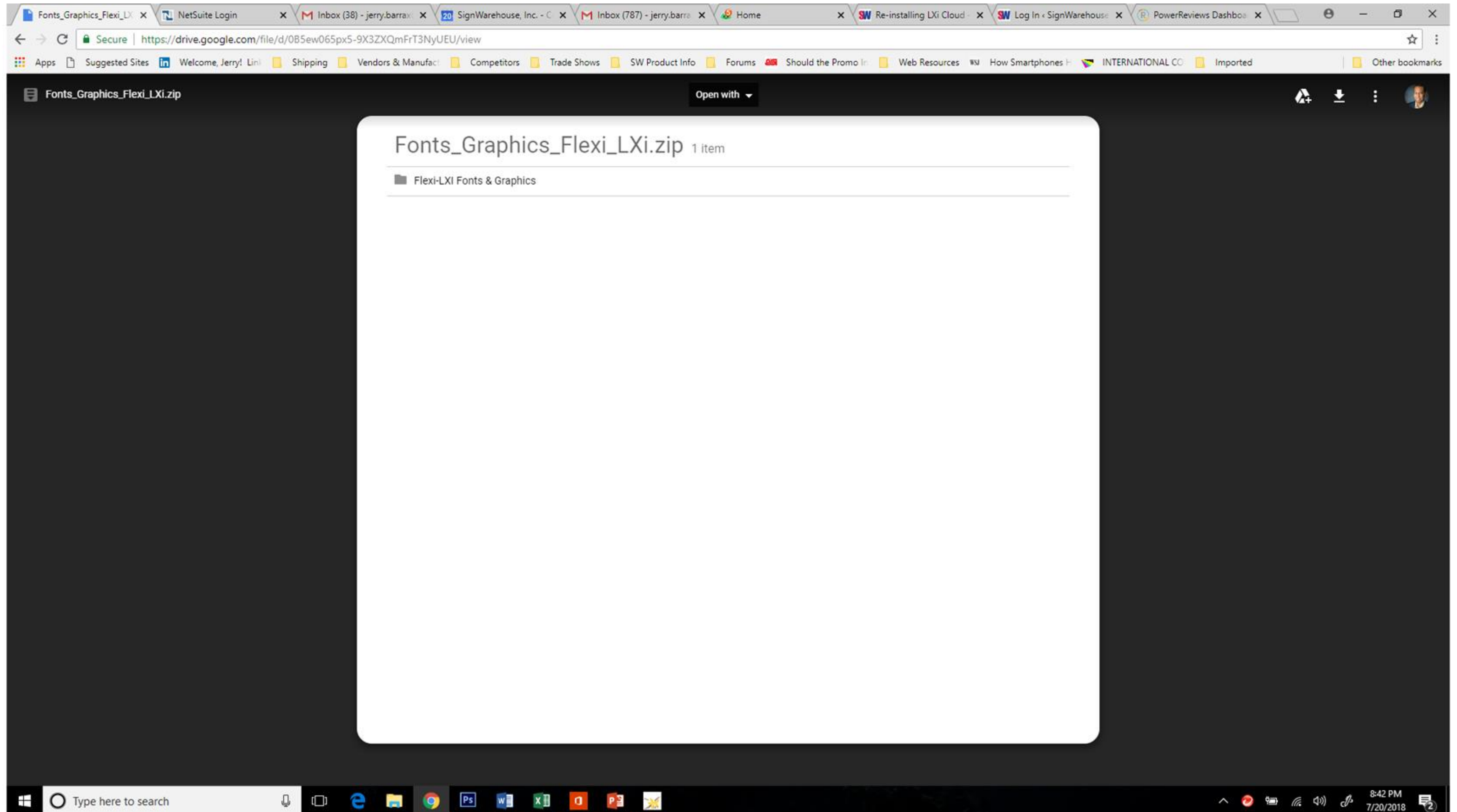
The screenshot shows a web browser window with multiple tabs. The active tab is titled "SignWarehouse, Inc. - C" and displays the URL <https://techsupport.signwarehouse.com/fonts-graphics/>. The page features a navigation bar with links like Home, Learn How, SW-TV, Catalog, Contact Us, and Tech Support. Below the navigation bar is the SignWarehouse logo and the text "TECHNICAL SUPPORT". A dropdown menu for "Software" is visible, showing options like Vinyl Cutters, Printers, Engravers, Software, and Other. The main content area is titled "Flexi-LXi Extras for Download" and includes a sub-header "Fonts, Graphics, Profiles". It mentions the article was written by SW Admin on Feb 6, 2015. The text states: "SignWarehouse is glad to provide downloadable fonts and clip art graphics to be used with your LXI and Flexi software." Below this text is an image of a computer monitor displaying a file explorer window. A list of instructions is provided:

- [Download Fonts and Graphics](#)
- Once you download the zipped folder, extract the content to a location that you can easily find and access.
- You will need to drag the desired font files into the Windows Font folder.

 At the bottom, it says: "You can also download the default input profiles for Flexi Sign & Print and LXI Rip 12." On the right side of the page, there is a sidebar with a search bar and a section titled "Most Popular Articles" listing various articles with their view counts.

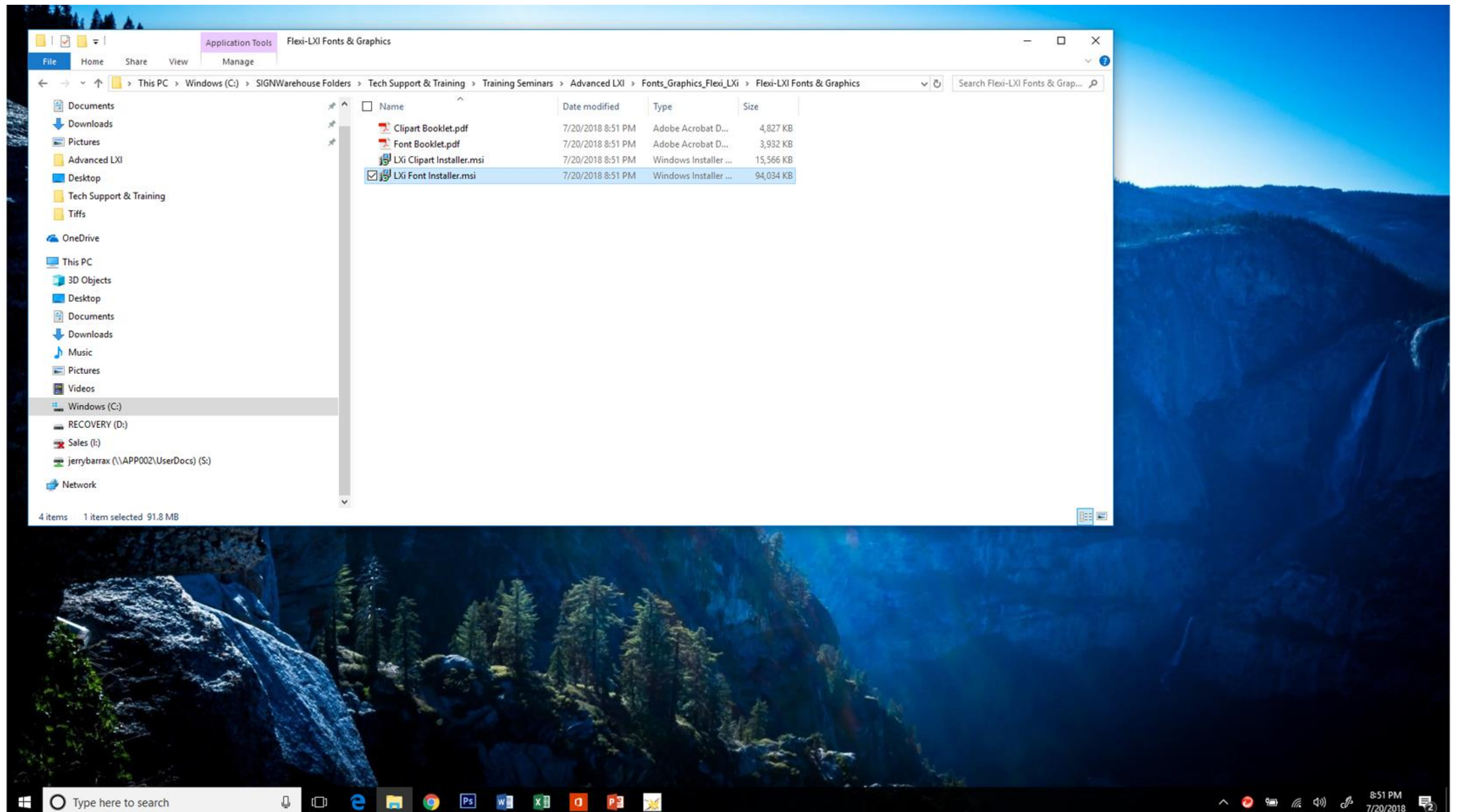
Downloading & Installing LXI Fonts & Clip Art

Download the zipped folder



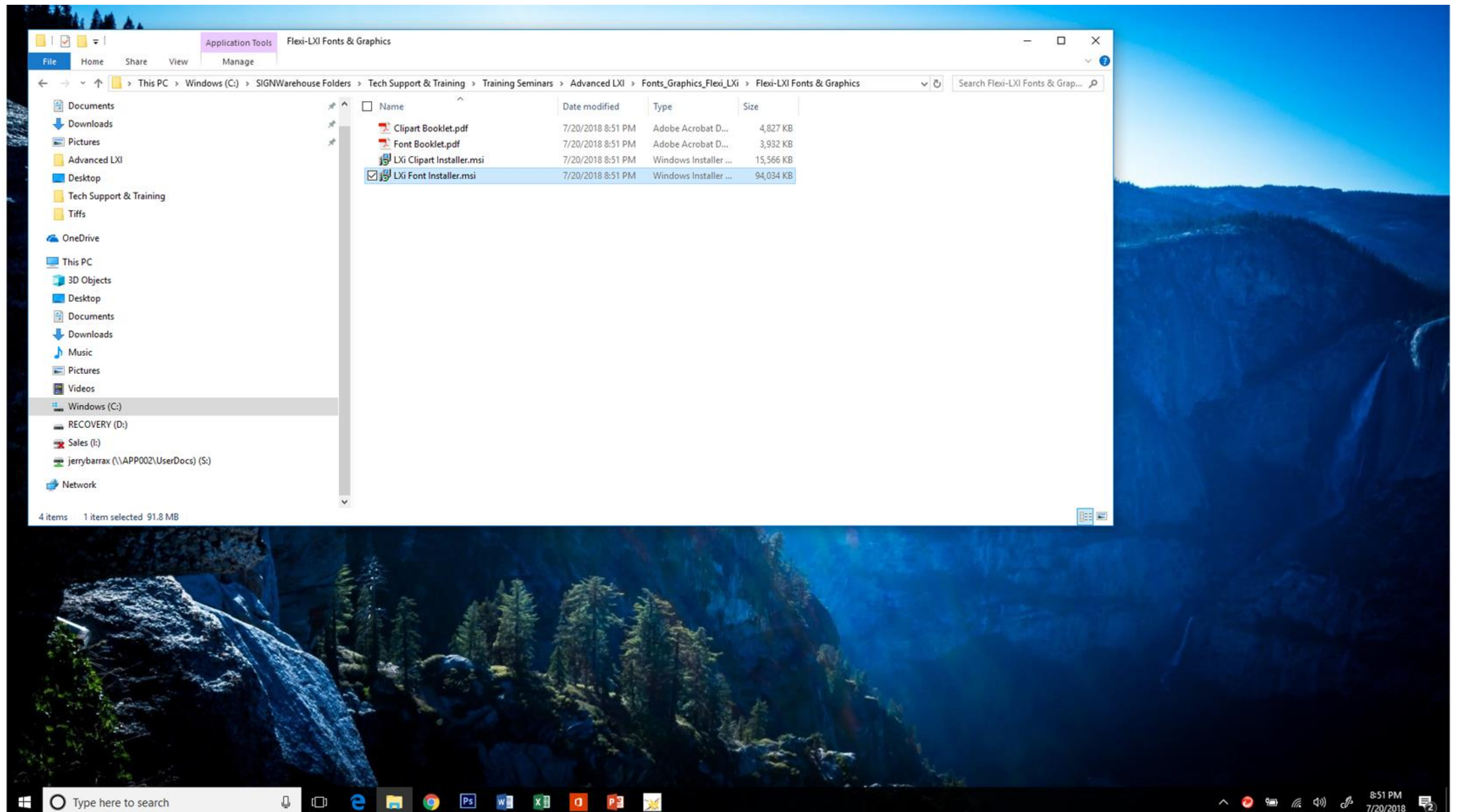
Downloading & Installing LXI Fonts & Clip Art

Explore to download location and unzip or extract the archive.



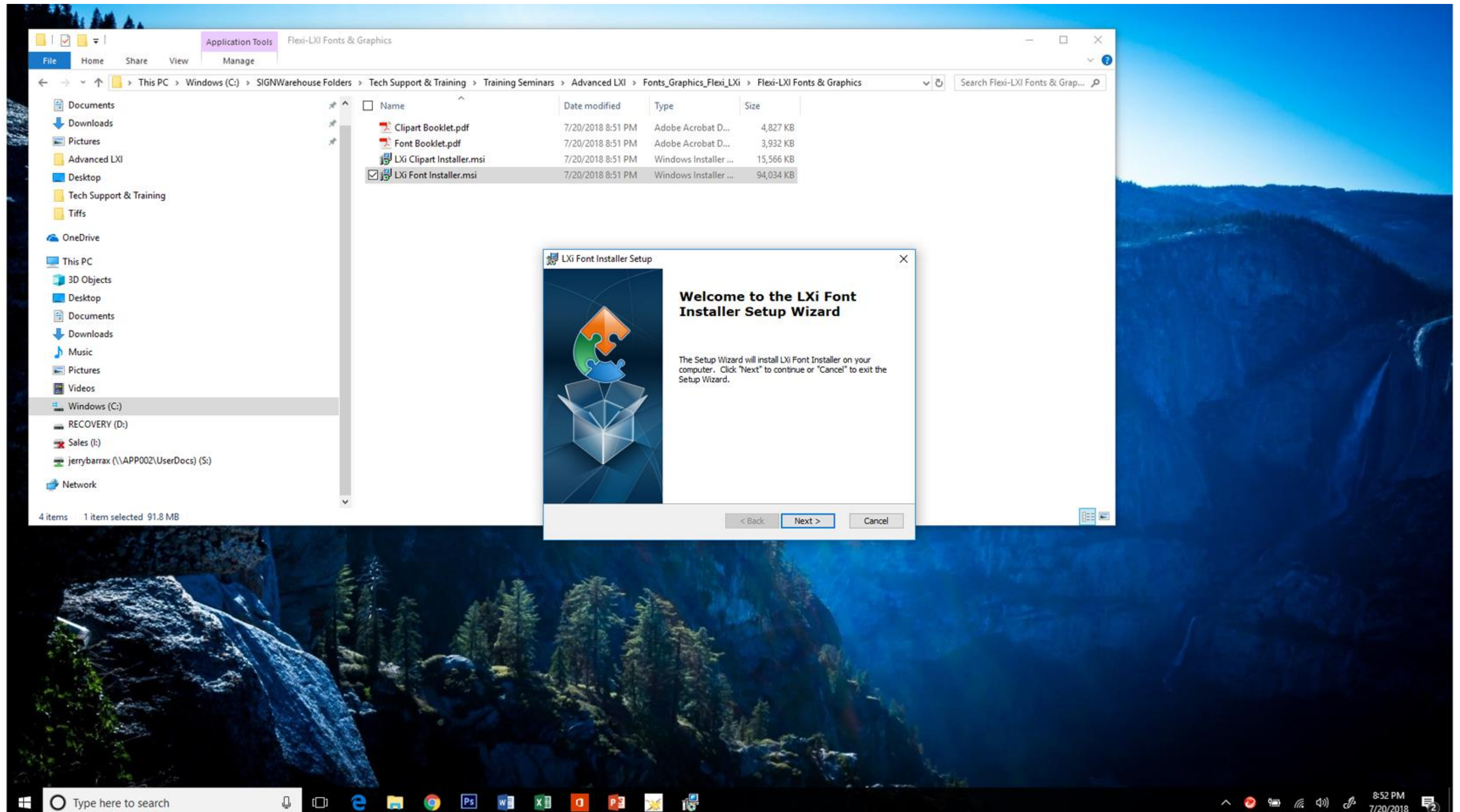
Downloading & Installing LXI Fonts & Clip Art

Double-click on LXI Font Installer.msi



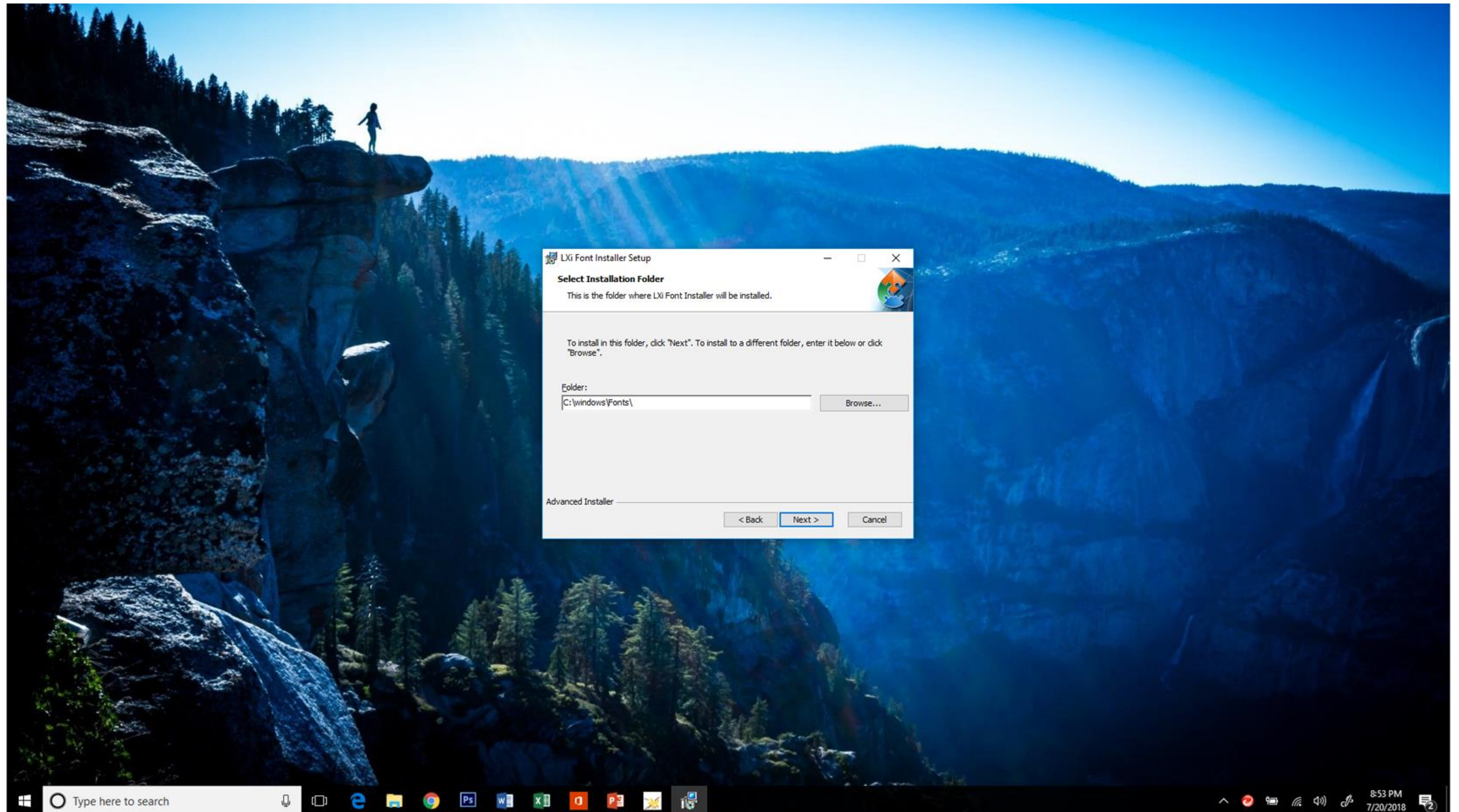
Downloading & Installing LXI Fonts & Clip Art

Click 'Next' to launch the font installer and follow the prompts.



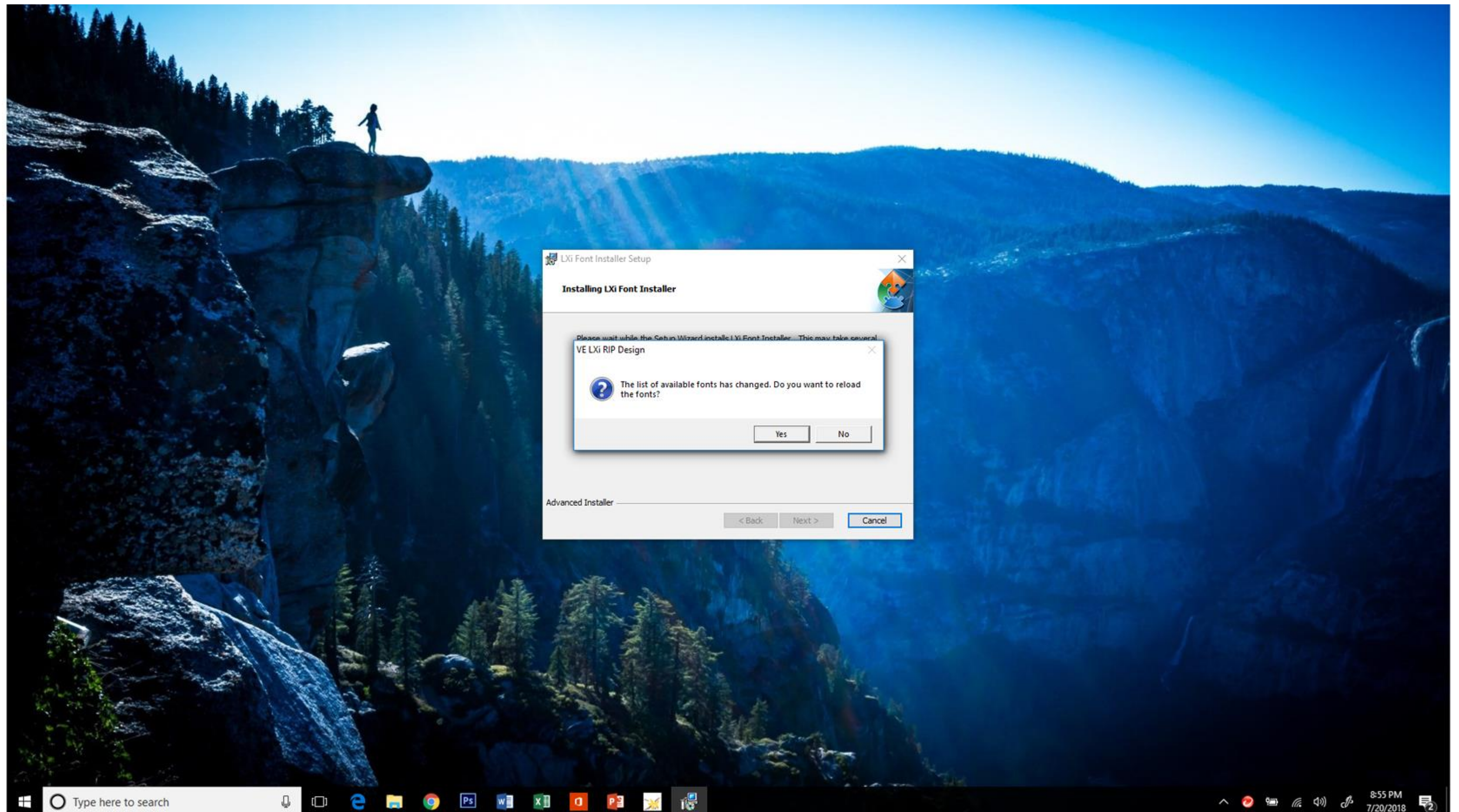
Downloading & Installing LXI Fonts & Clip Art

The new fonts will be installed in your default Windows Fonts folder



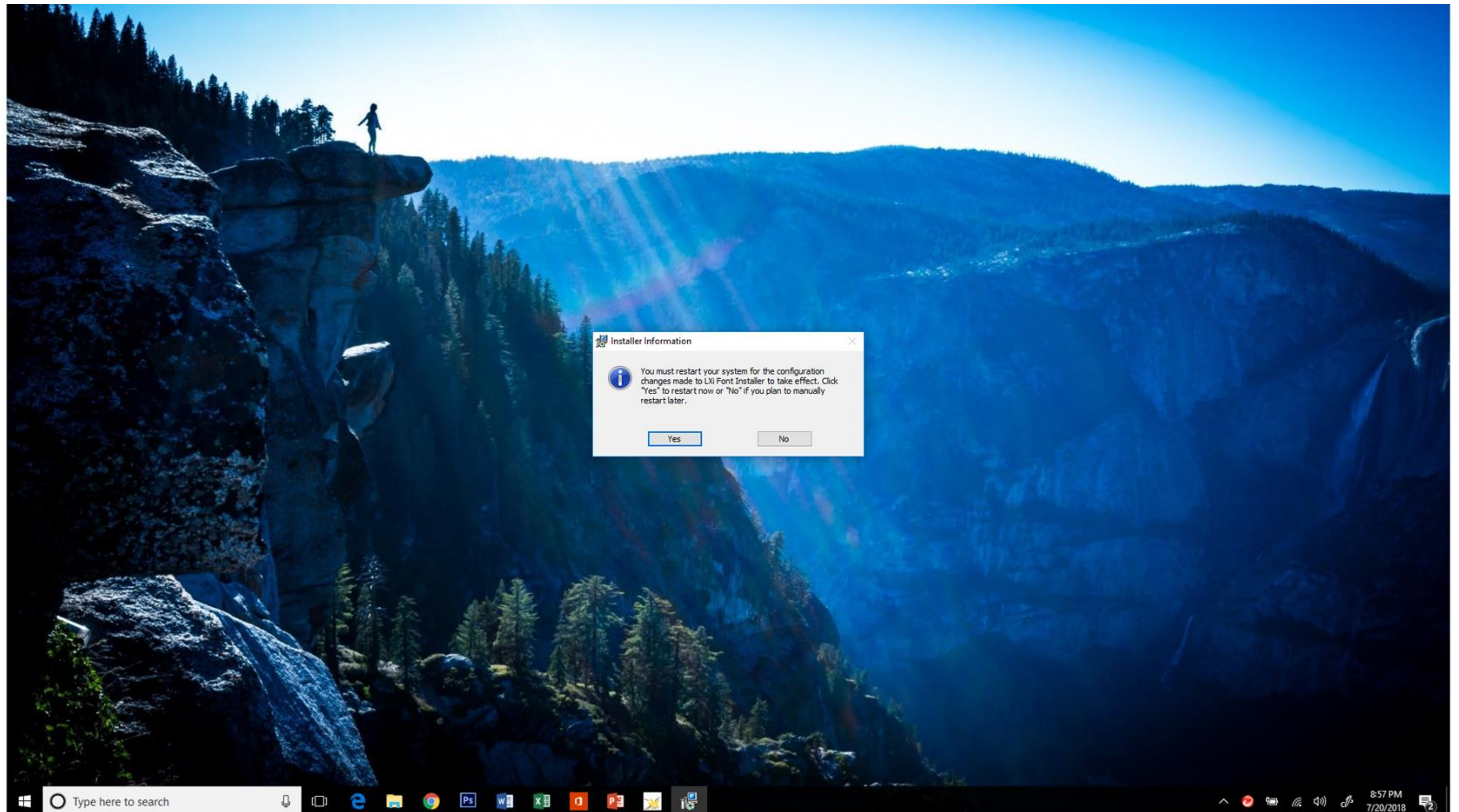
Downloading & Installing LXI Fonts & Clip Art

Respond 'Yes' to Fonts have changed nag screen



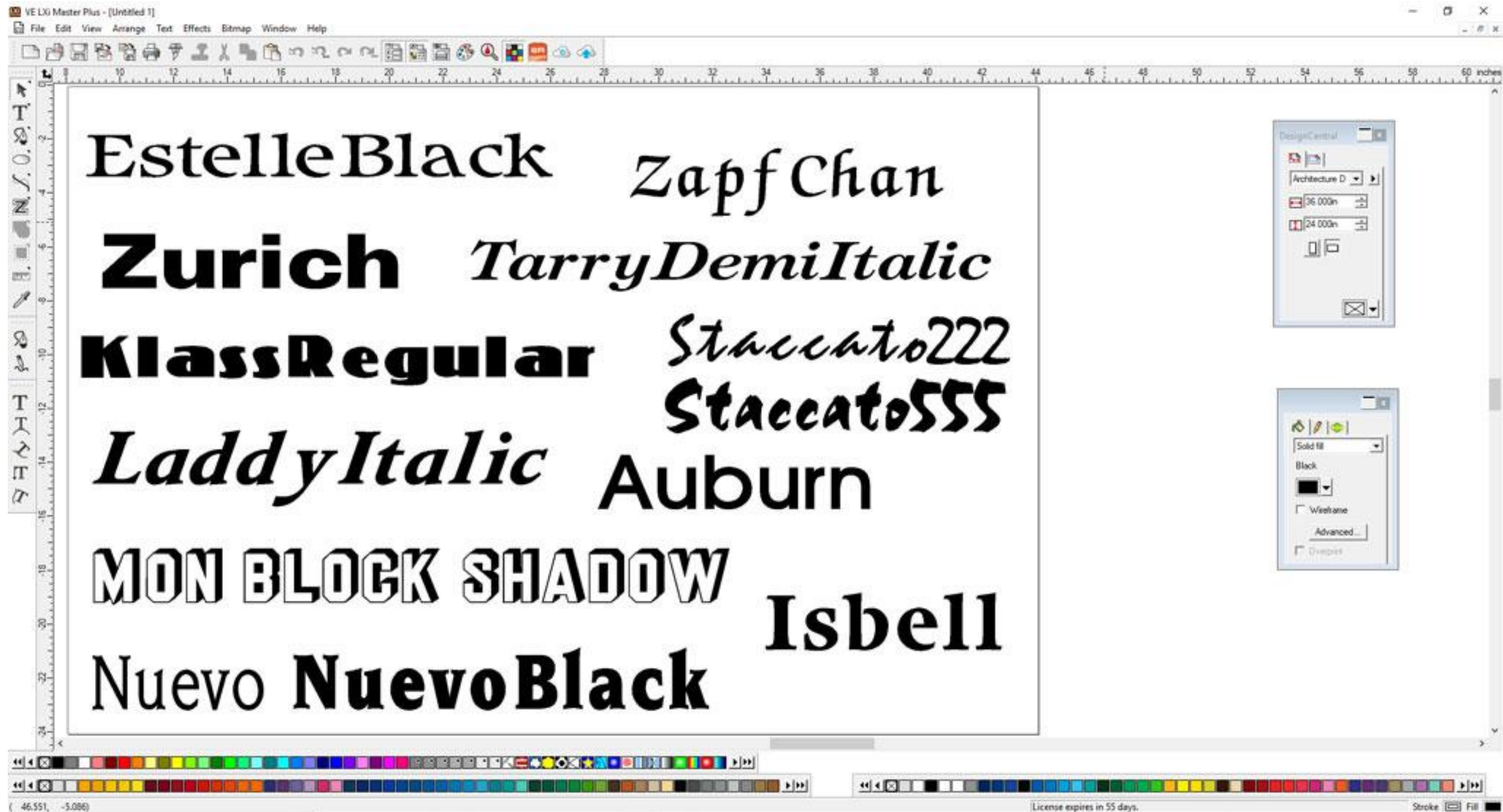
Downloading & Installing LXI Fonts & Clip Art

Restart your PC and you're home free



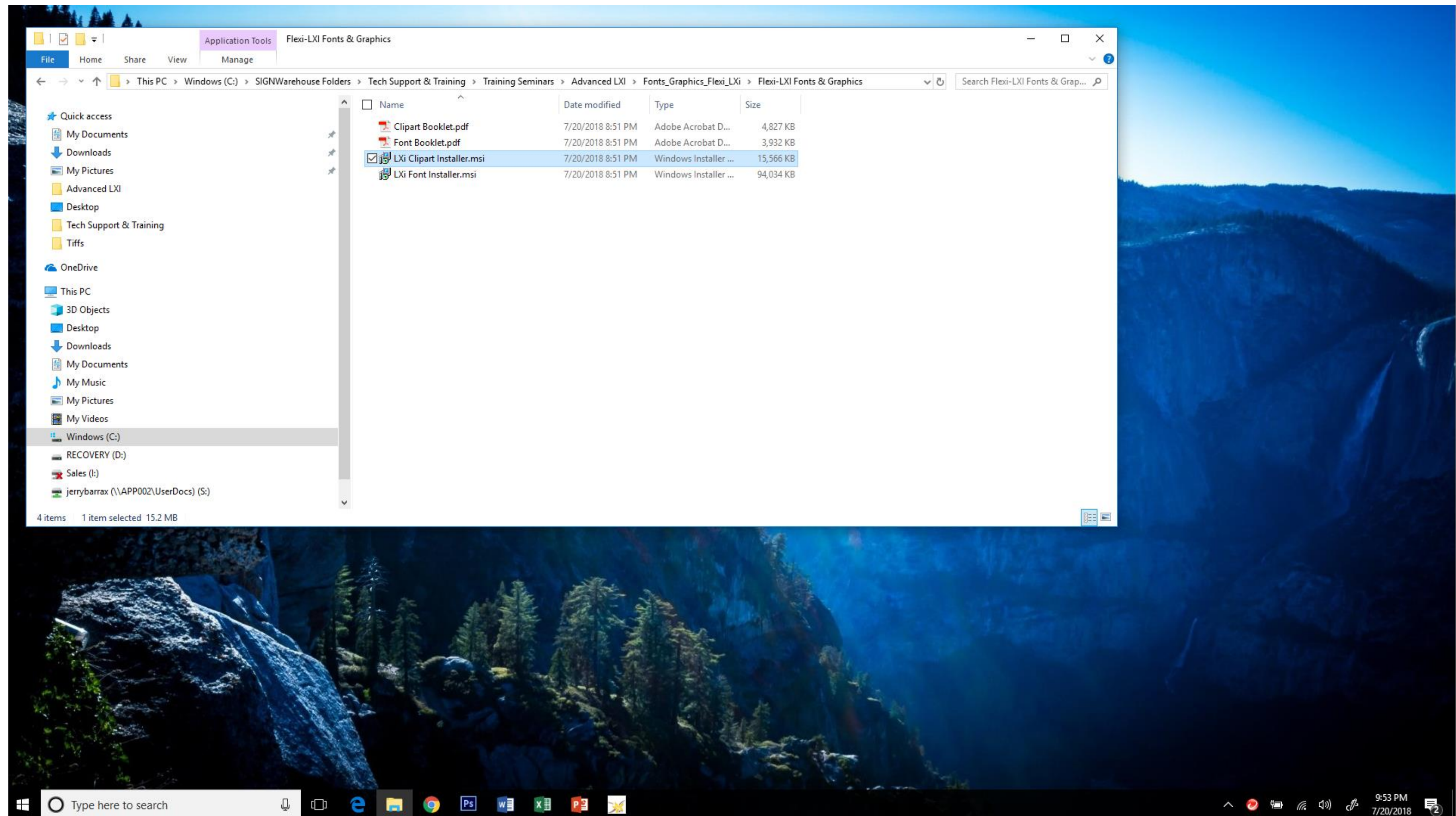
Downloading & Installing LXI Fonts & Clip Art

Here are just a few of the fun fabulous fonts you'll have access to when you're done. For a complete list of installed fonts, review the Font Booklet.pdf file in the folder where you downloaded and unzipped the files.



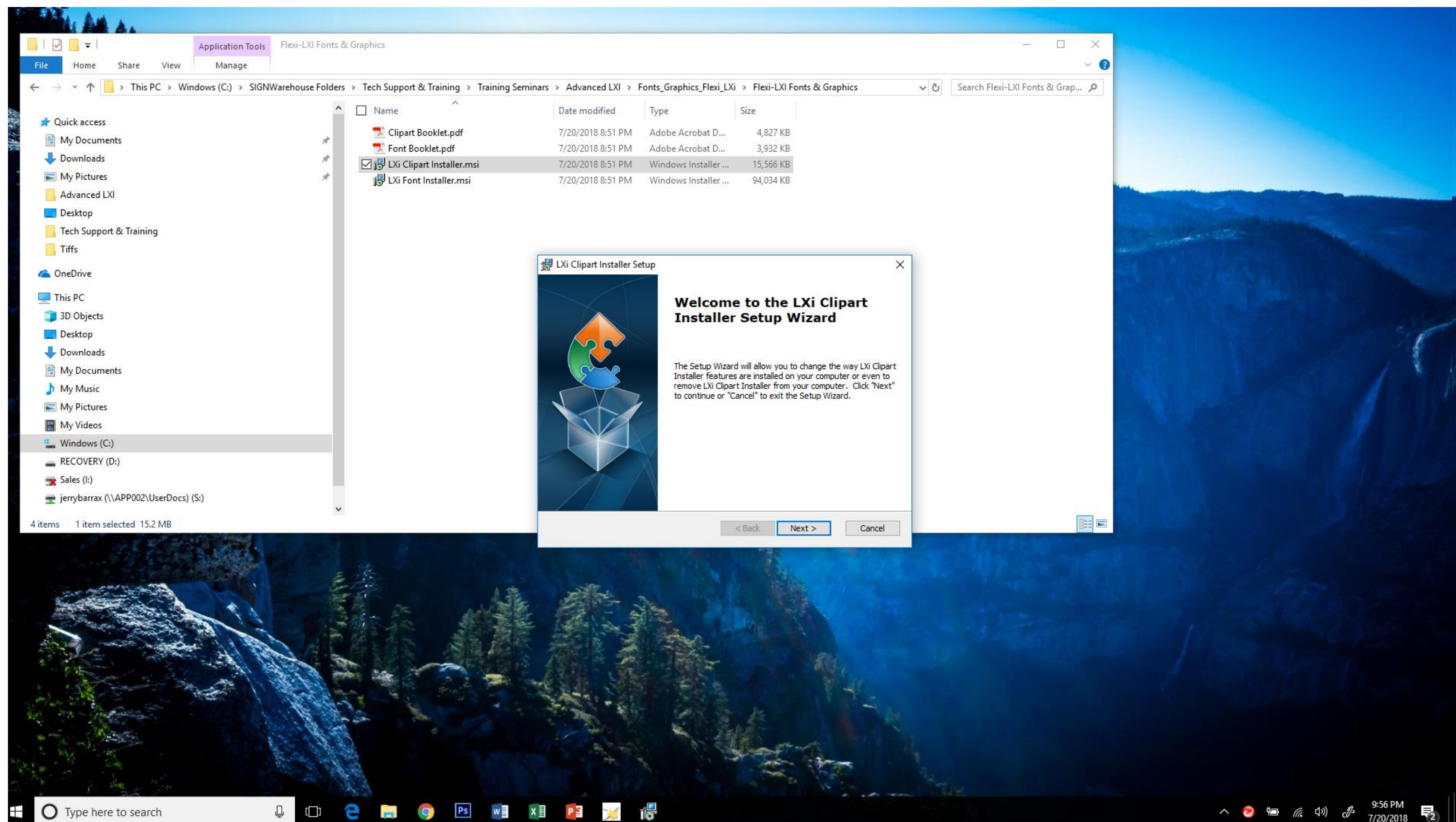
Downloading & Installing LXI Fonts & Clip Art

Explore to same download location and double-click the LXI Clip Art Installer.



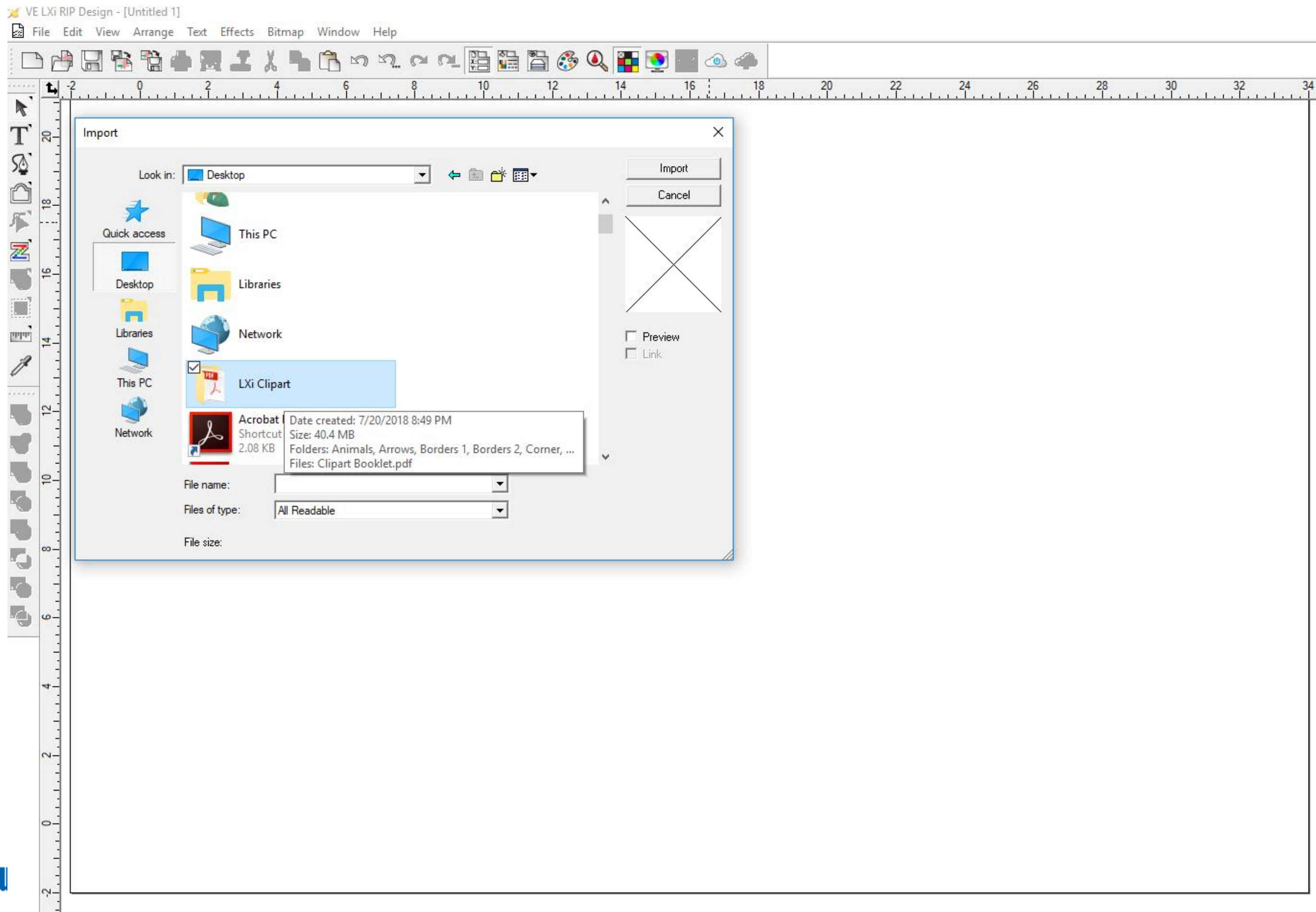
Downloading & Installing LXI Fonts & Clip Art

Launch the LXI Clip Art Installer and follow the prompts



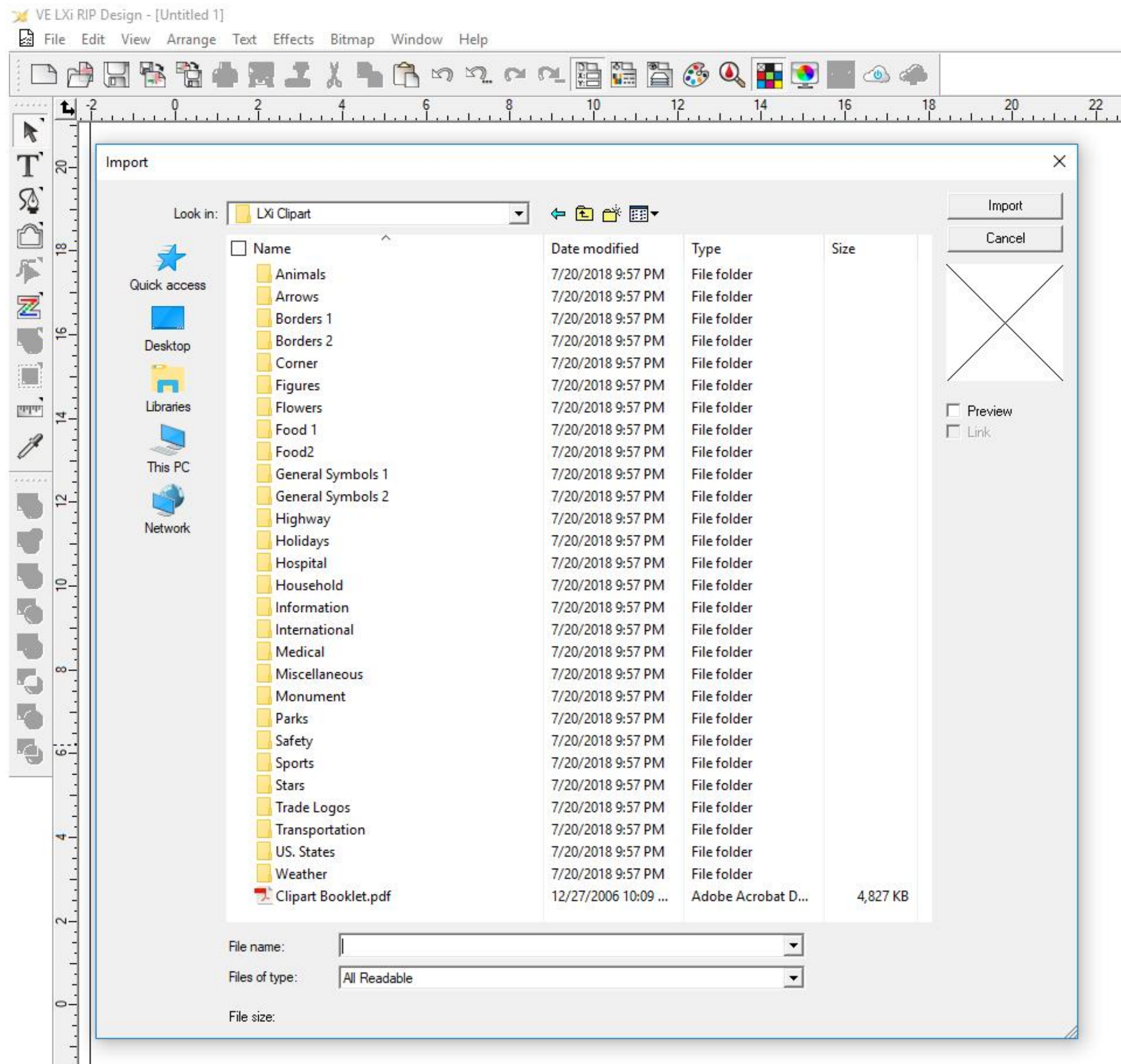
Downloading & Installing LXI Fonts & Clip Art

Launch LXI and use the File/Import command to search for the clip art collection. Browse to your desktop



Downloading & Installing LXI Fonts & Clip Art

Open the LXI Clipart Folder and browse for the image type you want. There are plenty at hand.



Downloading & Installing LXI Fonts

The desktop folder includes a PDF manual with a preview of each file for easy browsing.

